


SAFETY INSTRUCTIONS

Electricity is used to perform many useful functions, but it can also cause personal injuries and property damage if improperly handled. This product has been engineered and manufactured with the highest priority on safety. However, improper use can result in electric shock and / or fire. In order to prevent potential danger, please observe the following instructions when installing, operating, and cleaning the product. To ensure your safety and prolong the service life of your Liquid Crystal Display, please read the following precautions carefully before using the product.

1. Read these instructions.
2. Keep these instructions.
3. Heed all warnings.
4. Follow all instructions.
5. Do not use this apparatus near water.
6. Clean only with dry cloth.
7. Do not block any ventilation openings. Install in accordance with the manufacturer's instructions.
8. Do not install near any heat sources such as radiators, heat registers, stoves, or other apparatus (including amplifiers) that produce heat.
9. Do not defeat the safety purpose of the polarized or grounding-type plug. A polarized plug has two blades with one wider than the other. A grounding type plug has two blades and a third grounding prong. The wide blade and the third prong are provided for your safety. If the provided plug does not fit into your outlet, consult an electrician for replacement of the obsolete outlet.
10. Protect the power cord from being walked on or pinched particularly at the plugs, convenience receptacles, and the point where they exit from the apparatus.
11. Only use attachments/accessories specified by the manufacturer.
12.  Use only with the cart, stand, tripod, bracket, or table specified by the manufacturer, or sold with the apparatus. When a cart is used, use caution when moving the cart/apparatus combination to avoid injury from tip-over.
13. Unplug this apparatus during lightning storms or when unused for long periods of time.
14. Refer all servicing to qualified service personnel. Servicing is required when the apparatus has been damaged in any way, such as power-supply cord or plug is damaged, liquid has been spilled or objects have fallen into the apparatus, the apparatus has been exposed to rain or moisture, does not operate normally, or has been dropped.



SAFETY INSTRUCTIONS

Never place a display set in an unstable location. A display set may fall, causing serious personal injury or death. Many injuries, particularly to children, can be avoided by taking simple precautions such as:

1. Use only cabinets or stands recommended by the manufacturer of the display set.
2. Use only furniture that can safely support the display set.
3. Make sure the display set is not overhanging the edge of the supporting furniture.
4. Do not place the display set on tall furniture (for example, cupboards or bookcases) without anchoring both the furniture and the display set to a suitable support.
5. Do not place the display set on cloth or other materials that may be located between the display set and supporting furniture.
6. Make sure to warn and educate children about the dangers of climbing on furniture to reach the display set or its controls.
7. Keep a minimum distance of 5 cm around all edges of the display for sufficient ventilation.
8. The ventilation should not be impeded by covering the ventilation openings with items, such as newspapers, tablecloths, curtains, etc. Install in accordance with the manufacturer's instructions.
9. No naked flame sources, such as lighted candles, should be placed on the apparatus.
10. Use only the Sceptre provided power cable or power adapter approved for use with this device.
Utilisez uniquement la ligne d'alimentation électrique fournie par la verge ou l'adaptateur de courant autorisé pour ce dispositif.
11. Operating environment: Temperature: 5°C~40°C, Humidity: 10% to 85% non-condensing, Altitude: 0~2,000 m.

SAFETY INSTRUCTIONS

WARNING: TO REDUCE THE RISK OF FIRE OR ELECTRIC SHOCK, DO NOT EXPOSE THIS PRODUCT TO RAIN OR MOISTURE.

	CAUTION RISK OF ELECTRIC SHOCK DO NOT OPEN	
<p>CAUTION: TO REDUCE THE RISK OF ELECTRIC SHOCK, DO NOT REMOVE COVER (OR BACK). NO USER-SERVICEABLE PARTS INSIDE. REFER SERVICING TO QUALIFIED SERVICE PERSONNEL.</p>		



The lightning flash with arrow-head symbol, within an equilateral triangle, is intended to alert the user to the presence of uninsulated "dangerous voltage" within the product's enclosure that may be of sufficient magnitude to constitute a risk of electric shock to persons.



The exclamation point within a triangle is intended to alert the user to the presence of important operating and maintenance (servicing) instructions in the literature accompanying the product.

CAUTION: TO PREVENT ELECTRIC SHOCK, MATCH WIDE BLADE OF PLUG TO WIDE SLOT, FULLY INSERT.

CAUTION:

DO NOT PLACE THIS PRODUCT ON AN UNSTABLE CART, STAND, TRIPOD, BRACKET, OR TABLE. THE PRODUCT MAY FALL CAUSING SERIOUS PERSONAL INJURY AND SERIOUS DAMAGE TO THE PRODUCT. USE ONLY WITH A CART, STAND, TRIPOD, BRACKET, OR TABLE RECOMMENDED BY THE MANUFACTURER OR SOLD WITH THE PRODUCT. FOLLOW THE MANUFACTURER'S INSTRUCTIONS WHEN INSTALLING THE PRODUCT AND USE MOUNTING ACCESSORIES RECOMMENDED BY THE MANUFACTURER. A PRODUCT AND CART COMBINATION SHOULD BE MOVED WITH CARE. QUICK STOPS, EXCESSIVE FORCE, AND UNEVEN SURFACES MAY CAUSE THE PRODUCT AND CART COMBINATION TO OVERTURN.



WARNING: FCC Regulations state that any unauthorized changes or modifications to this equipment not expressly approved by the manufacturer could void the user's authority to operate this equipment.

CAUTION:

This product satisfies FCC regulations when shielded cables and connectors are used to connect the unit to other equipment. To prevent electromagnetic interference with electric appliances such as radios and televisions, use shielded cables and connectors for connections.

IMPORTANT INFORMATION



Dispose unwanted electronics and batteries through an approved recycler.

For display, please visit the web at <http://www.earth911.com/recycling-guide/how-to-recycle-large-electronics/>

For batteries, please visit the web at <http://www.call2recycle.org/>



For more information, visit: www.sceptre.com/recycling.html or call +1 (888) 580-5588.



This equipment has been tested and found to comply with the limits for a Class B digital device, pursuant to part 15 of the FCC Rules. Please refer to the last page for further references.



The house icon identifies that this product is for indoor use.



WARNING: This product can expose you to chemicals including lead, which is known to the State of California to cause cancer. For more information, go to www.P65Warnings.ca.gov.

IMPORTANT INFORMATION

This product is designed and manufactured to operate within defined design limits, and misuse may result in electric shock or fire. To prevent the product from being damaged, the following rules should be observed for the installation, use and maintenance of the product. Read the following safety instructions before operating the display. Keep these instructions in a safe place for future reference.

- To avoid the risk of electric shock or component damage, switch off the power before connecting other components to the display.
- Unplug the power cord before cleaning the display. Please use a microfiber cleaning cloth for cleaning the bezel of the display only. Do not use a liquid or a spray cleaner for cleaning the product. Do not use abrasive cleaners.
- Always use the accessories recommended by the manufacturer to insure compatibility.
- When moving the display from an area of low temperature to an area of high temperature, condensation may form on the housing. Do not turn on the display immediately after this to avoid causing fire, electric shock, or component damage.
- Do not place the display on an unstable cart, stand, or table. If the display falls, it can injure a person and cause serious damage to the appliance. Use only a cart or stand recommended by the manufacturer or sold with the display.
- Only use furniture that can safely support the display.
- Make sure the display is not overhanging the edge of the support furniture.
- Do not place the display onto tall furniture (such as cupboards or bookcases) without anchoring both the furniture and the display to a suitable support.
- Do not place the display on cloth or other materials that may be located between the display and supporting furniture.
- Be sure to educate your children regarding the dangers of climbing on furniture to reach the display or its controls.
- Any heat source should maintain a distance of at least 5 feet away from the display, i.e., radiator, heater, oven, amplifier etc. Do not install the product too close to anything that produces smoke or moisture. Operating the product close to smoke or moisture may cause fire or electric shock.
- Slots and openings in the back and bottom of the cabinet are provided for ventilation. To ensure reliable operation of the display and to protect it from overheating, be sure these openings are not blocked or covered. Do not place the display in a bookcase or cabinet unless proper ventilation is provided.
- Never push any object into the ventilation slots of the display. Do not place any objects on the top of the Product. It could short circuit parts causing a fire or electric shock. Never spill liquids on the display.
- Do not use the display in a portrait format (by rotating 90 degrees) under high temperature environment (25°C or higher), since this would retard heat dissipation and would eventually damage the display.
- The display should be operated only from the type of power source indicated on the label. If you are not sure of the type of power supplied to your home, consult your dealer or local power company.

- The power cable must be replaced when using different voltage from that specified in the User Manual. For more information, contact your dealer.
- The display is equipped with a two-pronged plug.
- Do not overload power strips and extension cords. Overloading can result in fire or electric shock.
- The wall socket should be installed near the equipment and should be easily accessible.
- Only the marked power source can be used for the product. Any power source other than the specified one may cause fire or electric shock.
- Do not touch the power cord during thunderstorms. To avoid electric shock, avoid handling the power cord during electrical storms.
- Unplug the unit during a lightning storm or when it will not be used for a long period of time. This will protect the display from damage due to power surges.
- Do not attempt to repair or service the product yourself. Opening or removing the back cover may expose you to high voltages, the risk of electric shock, and other hazards. If repair is required, please contact your dealer, and refer all servicing to qualified service personnel.
- Keep the product away from moisture. Do not expose this appliance to rain or moisture. If water penetrates into the product, unplug the power cord, and contact your dealer. Continuous use in this case may result in fire or electric shock.
- Do not use the product if any abnormality occurs. If any smoke or odor becomes apparent, unplug the power cord, and contact your dealer immediately. Do not try to repair the product yourself.
- Avoid using dropped or damaged appliances. If the product is dropped and the housing is damaged, the internal components may function abnormally. Unplug the power cord immediately and contact your dealer for repair. Continued use of the product may cause fire or electric shock.
- Do not install the product in an area with heavy dust or high humidity. Operating the product in environments with heavy dust or high humidity may cause fire or electric shock.
- Hold the power connector when removing the power cable. Pulling the power cable itself may damage the wires inside the cable and cause fire or electric shocks. When the product will not be used for an extended period of time, unplug the power connector.
- To avoid risk of electric shock, do not touch the connector with wet hands.
- Insert batteries in accordance with instructions while using the remote control. Incorrect polarities may cause damage and leakage of the batteries, operator injury and contamination the remote control.
- If any of the following occurs, please contact the dealer:
 - The power connector fails or frays.
 - Liquid sprays or any object drops into the display.
 - The display is exposed to rain or other moisture.
 - The display is dropped or damaged in any way.
 - The performance of the display changes substantially.
- Operating environment: Temperature: 5°C ~ 40°C, Humidity: 10% to 85% non-condensing, Altitude: 0~2,000 m.



Dear Sceptre Customer,

Congratulations on your new SCEPTRE **C32** LED monitor purchase. Thank you for your support. To ensure safety and many years of trouble-free operation of your LED monitor, please read the manual carefully before making any adjustments, and keep them in a safe place for future reference. We hope you enjoy your new SCEPTRE monitor.

For technical assistance, please call 1(800) 788-2878 or email our tech support group at SceptreTS@SCEPTRE.com.

For all other inquiries, please call 1(800) 788-2878 or email our customer service group at SceptreCS@SCEPTRE.com.

Technical Support, Customer Service, and Online Chat available during business hours Monday to Friday 8:30AM - 5:30PM (Pacific Standard Time).

We recommend you register your SCEPTRE monitor by going to our website <http://www.sceptre.com/registration.html>.

Opening the Package

The SCEPTRE display is packaged in a carton. The size and weight of the product might be too heavy for 1 person to handle. In the event of that happening, it is recommended that the display package must be handled by a minimum of 2 or more persons. Since the glass can be easily scratched or broken, please handle the product gently. Never place the unit on a surface with the glass facing downwards unless it is on protective padding. When opening the carton, check that the product is in good condition and that all standard accessories and items are included. Save the original box and all packing materials for future shipping needs.

Package Contents

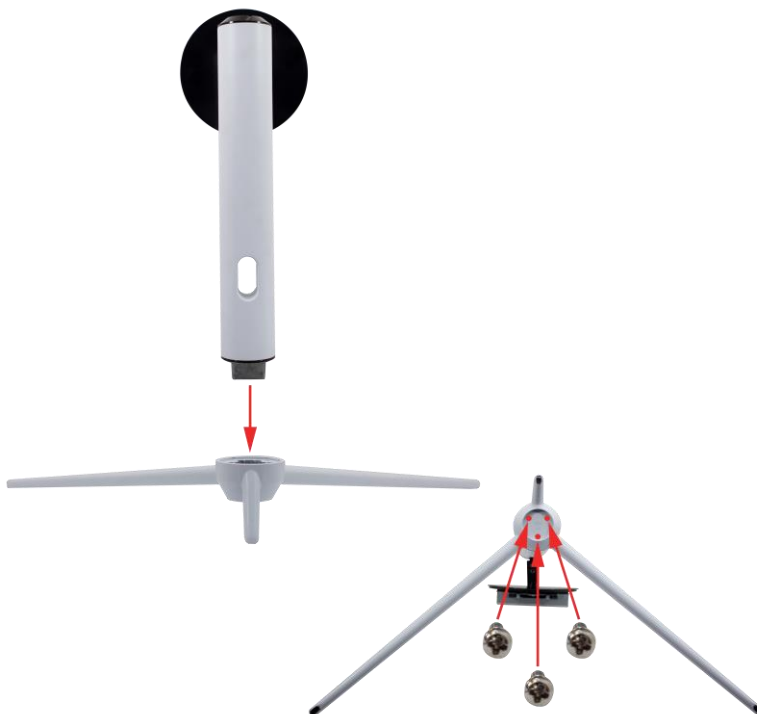
SCEPTRE Display x 1
Display Base x 1
Display Neck x 1
Display Base Screw x 3 (M5 x 15mm)
Wall Mount Plate x 1
Wall Mount Plate Screws x 4 (M4 x 16mm)
DisplayPort Cable x 1
AC Power Cable x 1
Power Adapter x 1
User Manual x 1

Installation

Please read the user manual carefully before performing the installation. When an extension cord is required, use one with the correct power rating. Use only the Sceptre provided power cable or power adapter approved for use with this device. The product should be installed on a flat surface to avoid tipping. Space should be maintained between the back of the product and the wall for proper ventilation. Avoid installing the product in the kitchen, bathroom or other places with high humidity dust or smoke, so as not to shorten the service life of the electronic components. Please ensure the product is installed with the screen in landscape orientation. Any 90° clockwise or counterclockwise installation may induce poor ventilation and successive component damage.

Installing the Monitor Stand Assembly

1. Take the monitor with packing foam out of the box. Lay the monitor screen facing down on a table with the monitor still resting on the packing foam. Obtain the display base and attach it to the display neck. While the neck is attached to the base, insert, and tighten 3 base screws to the bottom of the base.



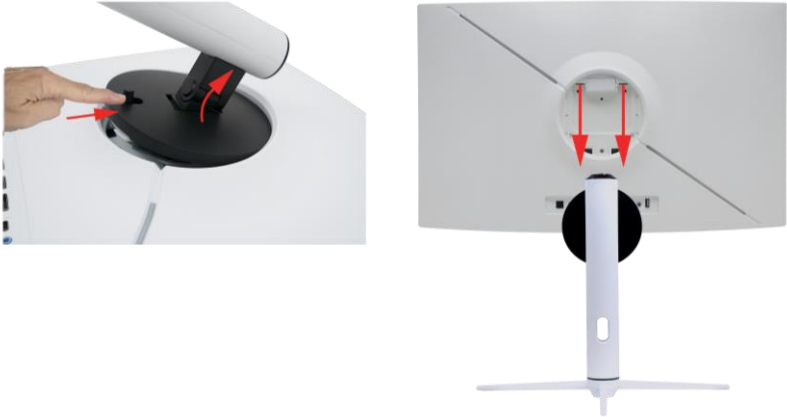
2. Open the packing foam with the monitor resting facing downwards. Take the assembled stand piece and insert it headfirst into the circular opening on the back of the monitor.



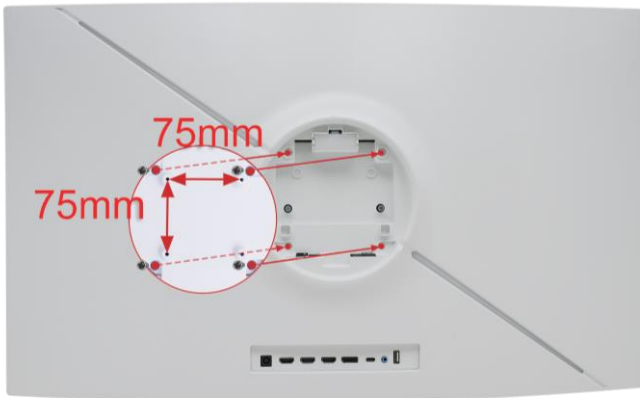
3. Once it is inserted press downwards on the neck until you hear a click sound.
4. To finalize your installation of the display, please read the following:
 - a. If you are placing the display on a stand, we would recommend you to use a display safety strap (not included) in order to minimize the possibility of the display toppling over.
 - b. Securely install all screws and connections.

Wall Mounting

1. To prep the monitor for wall mounting, remove the back plate by pushing up on the lever near the neck joint with the monitor and lifting the stand piece upwards. Once the stand is lifted upwards you can slide out the entire stand assembly.



2. With the circular indentation now open to you, you will see 4 screws installed on the back of the monitor. Please unscrew them.
3. Install the wall mount plate to the back of the monitor using the provided **Wall Mount Plate Screws (M4 x 16mm)**.



4. Once the wall mount plate is installed, the monitor is ready to be wall mounted. **The mounting pattern is 75mm x 75mm.**

Table of Contents

SAFETY INSTRUCTIONS	1
IMPORTANT INFORMATION	4
Opening the Package	8
Package Contents	8
Installation	8
Installing the Monitor Stand Assembly	9
Wall Mounting	11
Table of Contents	12
Identifying Front and Rear Panel	13
Front View	13
Rear View	13
Front View with Buttons	15
Panel Swivel Adjustment	16
Panel Tilt Adjustment	16
Panel Height Adjustment	17
Rear View with Connections	18
Connections	20
If You have HDMI Connection on Your Video Card	20
If You have DisplayPort Connection on Your Video Card	21
If You have USB-C™ Connection on Your Video Card	22
If You want to use dual input PIP/PBP on the monitor	23
On Screen Display (OSD) Menu	24
PICTURE	26
COLOR	28
SYSTEM	29
Supported DisplayPort Resolution	30
Supported HDMI Resolution	30
Supported USB-C™ Resolution	31
Troubleshooting	32
How do I detach the DisplayPort Cable?	35
How do I clean the monitor?	36
Specification	37
LIMITED PRODUCT WARRANTY	38
Disclaimer, Trademarks, Icons & Copyright Information	40
FCC Compliance Statement	41

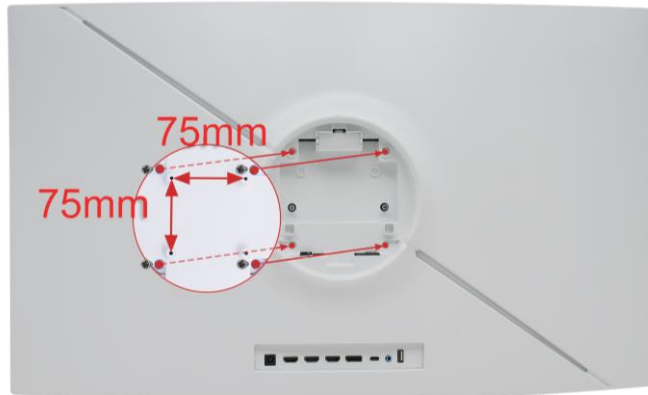
Identifying Front and Rear Panel

Front View



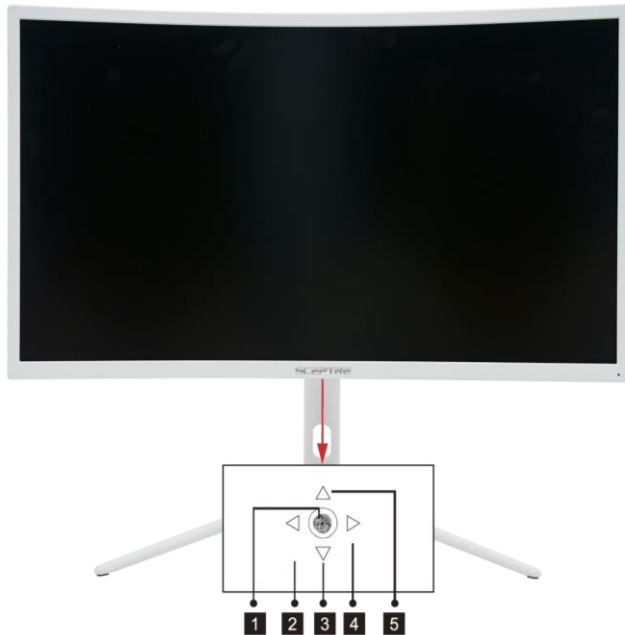
1. **Indicator Light** – The light is blue when the monitor is turned on. The light is red when the monitor is turned off but plugged into power. The light is flashing blue when there is no signal given to the monitor.
2. **Ambient Light Sensor** – When the ambient light sensor is turned on, the screen's brightness changes with the ambient light of the room. The brighter the room is, the brighter the screen, the dimmer the room, the dimmer the screen. When the light sensor is turned off, the monitor returns to the user's original brightness settings.

Rear View



The mounting holes are covered by the stand. Once you remove the stand, you will need to attach a mounting plate to wall mount the monitor. The mounting pattern is 75mm x 75mm using M4 x 16mm screws.

Front View with Buttons



Monitor Joystick Control

1. ● – When the monitor is off, pressing this button will turn on the monitor. When the monitor is on, pressing and **holding** this button will turn the monitor off. With no OSD, pressing the joystick button inward will open the monitor's OSD. With the OSD turned on, pressing the joystick button inward will enter into the selected option.
2. ◀ – With no OSD, this joystick direction opens the Volume OSD and decreases the monitor's volume output. With the OSD turned on, this joystick direction exits the OSD Menu.
3. ▼ – With no OSD, pulling the joystick towards you opens the Source OSD, allowing you to change the input source of the monitor. With the OSD turned on, pull the joystick towards you moves the selection downwards. This button will also decrease the value of an adjustment while an option is open.
4. ▶ – With no OSD, this joystick direction opens the Volume OSD and increases the monitor's volume output. With the OSD turned on, this joystick selects or enters the selected option.
5. ▲ – With no OSD, pushing the joystick away from you adjusts the monitor's Picture Preset settings. While the OSD is active, pushing the joystick away from you moves the selection upwards. This button will also increase the value of an adjustment while an option is open.

Panel Swivel Adjustment



The monitor stand can swivel $15^{\circ} \pm 2^{\circ}$.

Panel Tilt Adjustment



The screen can be adjusted by inclining forward and backward; however, the specific adjustment depends on the specific model of the device. Generally, it may be inclined $5^{\circ} \pm 2^{\circ}$ forward and $15^{\circ} \pm 2^{\circ}$ backward.

Please Note:

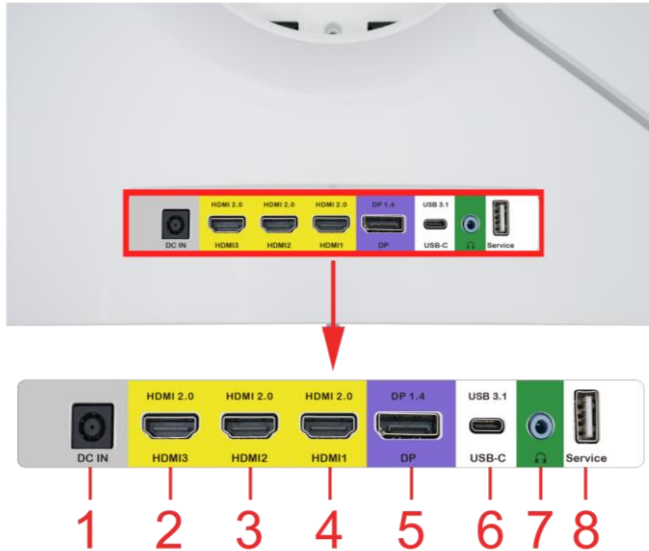
- When adjust the angle of the monitor, be sure not to touch or press the LCD screen.

Panel Height Adjustment



The screen height can be adjusted by **3.74" ($\pm 0.19"$)**. The screen can be adjusted by lifting the bottom of the display.

Rear View with Connections



1. **DC IN** – This port is for connecting the provided AC Power Adapter to power your monitor. Please do not use any other power supply other than the one supplied by Sceptre.
2. **HDMI 3** – HDMI stands for High-Definition Multimedia Interface. This connection is for computers with HDMI video output. HDMI supports adaptive sync, a feature that eliminates picture tearing and stuttering. HDMI 3 is HDMI 2.0.
3. **HDMI 2** – HDMI stands for High-Definition Multimedia Interface. This connection is for computers with HDMI video output. HDMI supports adaptive sync, a feature that eliminates picture tearing and stuttering. HDMI 2 is HDMI 2.0.
4. **HDMI 1** – HDMI stands for High-Definition Multimedia Interface. This connection is for computers with HDMI video output. HDMI supports adaptive sync, a feature that eliminates picture tearing and stuttering. HDMI 1 is HDMI 2.0.
5. **DP** – DisplayPort (DP) is a digital video connection for connection to computers with display port video output.
6. **USB-C™** – This port serves as a video connection called DisplayPort™ over USB-C™ which offers the same resolution as a regular DisplayPort.
7. **AUDIO OUT (3.5mm Mini-jack)** – This connection is for audio out from the monitor to multimedia speakers or headphones.
8. **SERVICE** – This is the service port for the monitor.

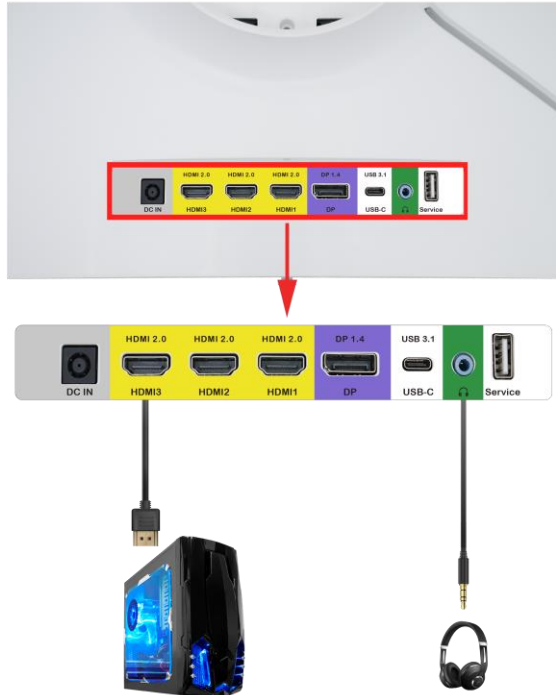
Please Note:

- HDMI at native resolution 2560 x 1440 will support 144Hz.
- DP at native resolution 2560 x 1440 will support 165Hz.

- In order to remove the DP cable from the monitor you need to depress the buckle on the cable while unplugging.

Connections

If You have HDMI Connection on Your Video Card...

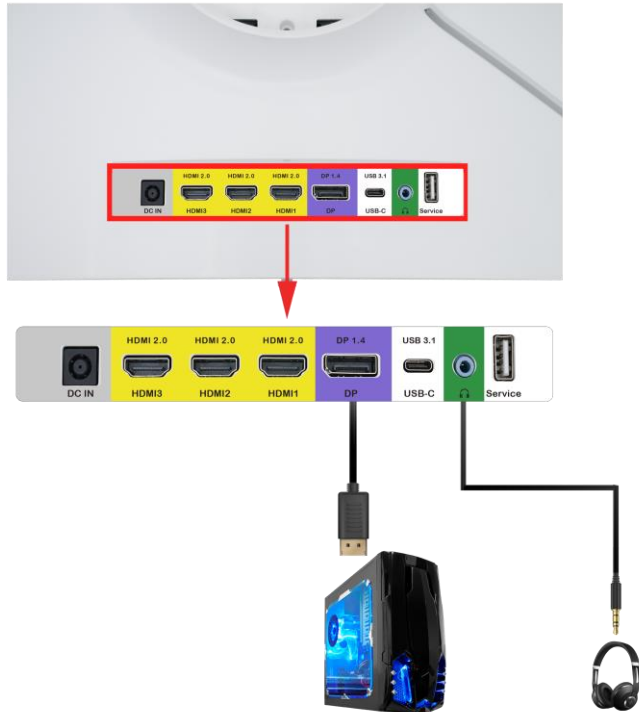


1. Make sure the power of the C32 LED MONITOR is turned off.
2. Obtain a HDMI cable and connect one end to the back of the monitor and the other end to the back of the computer.
3. For audio you can plug in a set of headphones or speakers into the headphone jack.
4. Turn on the power of both the C32 LED MONITOR and the computer.

Please Note:

- At optimal resolution of 2560 x 1440, the support refresh rate is 144Hz for HDMI.

If You have DisplayPort Connection on Your Video Card...

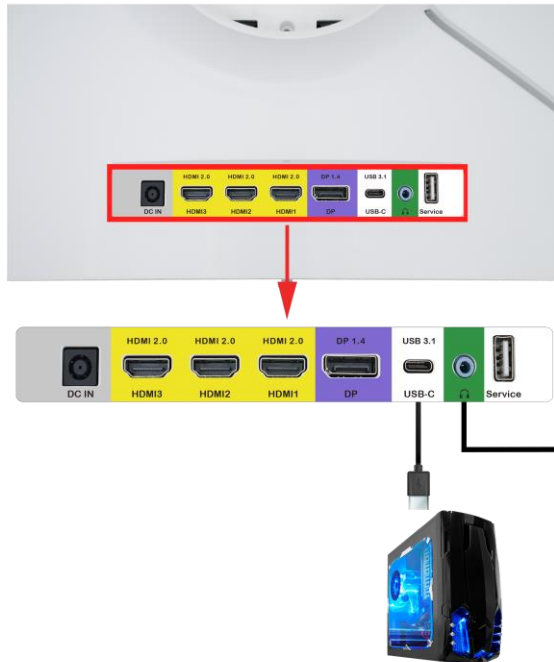


1. Make sure the power of the C32 LED MONITOR is turned off.
2. Obtain a DisplayPort cable and connect one end to the back of the monitor and the other end to the back of the computer.
3. For audio you can plug in a set of headphones or speakers into the headphone jack.
4. Turn on the power of both the C32 LED MONITOR and the computer.

Please Note:

- DisplayPort supports up to 165Hz refresh rate.
- At optimal resolution of 2560 x 1440, the support refresh rate is 165Hz for DP.

If You have USB-C™ Connection on Your Video Card...

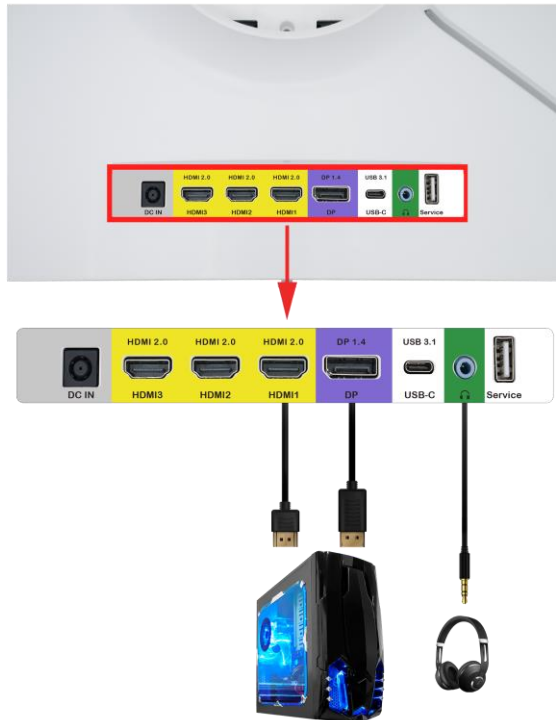


1. Make sure the power of the C32 LED MONITOR is turned off.
2. Obtain a USB-C to USB-C cable and connect one end to the back of the monitor and the other end to the back of the computer.
3. For audio you can plug in a set of headphones or speakers into the headphone jack.
4. Turn on the power of both the C32 LED MONITOR and the computer.

Please Note:

- USB-C supports up to 60Hz refresh rate.
- At optimal resolution of 2560 x 1440, the support refresh rate is 60Hz for USB-C.
- The USB-C port is not meant to be used as a monitor power source. You need to connect a separate power cord to supply power to the monitor.
- The USB-C port does provide power. However, it is recommended by the manufacturer to not use the USB-C port on the monitor as a charging port.

If You want to use dual input PIP/PBP on the monitor...



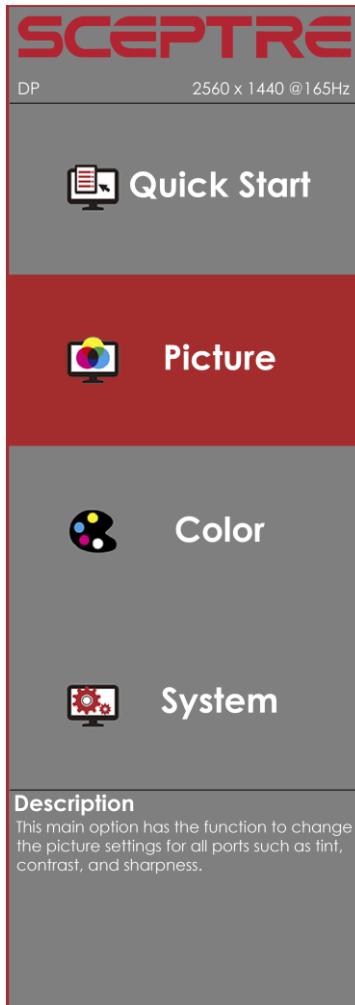
1. Make sure the power of the C32 LED MONITOR is turned off.
2. Obtain a DisplayPort cable and connect one end to the back of the monitor and the other end to the back of the computer.
3. Obtain a HDMI cable and connect one end to the back of the monitor and the other end to the back of the computer.
4. For audio you can plug in a set of headphones or speakers into the headphone jack.
5. Turn on the power of both the C32 LED MONITOR and the computer.
6. From the monitor side, open the OSD by pressing the ► button. Under PICTURE, select and turn on Multi Window either by using PIP or PBP. Change to the correct HDMI source (diagram above shows computer connected to HDMI 1) for the secondary input.
7. From windows go to display settings and select extend display to show the desktop on both inputs.

Please Note:

- When running multiple windows, the lowest refresh rate signal given will be the refresh rate for all windows.


On Screen Display (OSD) Menu

The OSD menu of the monitor provides various adjustments for the monitor such as color, brightness, and contrast etc.




When you press the ● button on the monitor, the OSD screen will appear. Select each of the functions with the ▲ or ▼ buttons. Use the ► button again to enter each of the function or when you are in the function already, use the ► button to select the option you want to adjust. Use the ▲ or ▼ buttons to adjust each option's values. When you want to exit press the ◀ button.

QUICK START

 Quick Start	
Backlight	80
Brightness	50
Contrast	50
Preset	User
Volume	50
Aspect Ratio	Full
Source	HDMI1
Blue Light Shift	Off
Adaptive Sync	On

1. **BACKLIGHT** – This option adjusts the intensity of the LED diode directly.
2. **BRIGHTNESS** – This option adjusts the brightness of the monitor.
3. **CONTRAST** – This option adjusts the contrast of the monitor.
4. **PRESET** – This option lets the user select different preset display modes of the monitor.
Only USER mode will allow the user to adjust options freely.
 - a. **STANDARD** – This display mode is for regular users.
 - b. **USER** – This display mode allows you to adjust contrast and brightness manually.
 - c. **MOVIE** – This display mode is for playing movies.
 - d. **ECO** – This display mode is for power saving.
 - e. **FPS** – This display mode is for playing first person shooter games.
 - f. **RTS** – This display mode is for playing real time strategy games.
5. **VOLUME** – This option adjusts the loudness of the speaker.
6. **ASPECT RATIO** – This option lets the user adjust the aspect ratio of the monitor.
 - a. **FULL** – This option automatically stretches any picture to the full screen regardless of picture proportion.
 - b. **DOT BY DOT** – This option displays the resolution exactly as is.
 - c. **4:3** – This option forces any resolution to a 4:3 square format.
7. **SOURCE** – This option lets the user manually switch an input or auto where the monitor detects a signal and changes the source automatically.
8. **BLUE LIGHT SHIFT** – This display mode filters out blue light for users who want blue light protection.
9. **ADAPTIVE SYNC** – This on or off the Adaptive Sync, enabling smoother gameplay.

PICTURE

 Picture	
Backlight	80
Brightness	50
Contrast	50
Preset	User
DCR	Off
Aspect Ratio	Full
Sharpness	50
MPRT	Off
Multi Window	Off
Secondary Input	HDMI2
PIP Size	Medium
PIP Position	Bottom L
Audio Source	HDMI1
Multi Window Swap	


1. **BACKLIGHT** – This option adjusts the intensity of the LED diode directly.
2. **BRIGHTNESS** – This option adjusts the brightness of the monitor.
3. **CONTRAST** – This option adjusts the contrast of the monitor.
4. **PRESET** – This option lets the user select different preset display modes of the monitor.

Only USER mode will allow the user to adjust options freely.


- a. **STANDARD** – This display mode is for regular users.
 - b. **USER** – This display mode allows you to adjust contrast and brightness manually.
 - c. **MOVIE** – This display mode is for playing movies.
 - d. **ECO** – This display mode is for power saving.
 - e. **FPS** – This display mode is for playing first person shooter games.
 - f. **RTS** – This display mode is for playing real time strategy games.
5. **DCR** – This option turns on or off the dynamic contrast option of the monitor. Dynamic Contrast automatically adjusts the contrast of the monitor based off the video signal provided.
 6. **ASPECT RATIO** – This option lets the user adjust the aspect ratio of the monitor.
 - a. **FULL** – This option automatically stretches any picture to the full screen regardless of picture proportion.
 - b. **DOT BY DOT** – This option displays the resolution exactly as is.
 - c. **4:3** – This option forces any resolution to a 4:3 square format.
 7. **SHARPNESS** – This option adjusts the sharpness of graphics and text for this monitor.
 8. **MPRT** – This option allows users to increase the pixel response time.

9. **MULTI WINDOW** – This option allows user to display a second source of video simultaneously on the monitor.
 - a. **PIP** – This option displays a second source of video in a small window at the corner of the monitor.
 - b. **PBP** – This option displays a second source of video on the right half of the monitor.
10. **SECONDARY INPUT** – This option lets the user select the input of the second video.
11. **PIP SIZE** – This option changes the size of the PIP window.
12. **PIP POSITION** – This option changes the location of the PIP window.
13. **AUDIO SOURCE** – This option lets the user select the audio either from the main display source or the PIP/PBP display source.
14. **MULTI WINDOW SWAP** – This option swaps the video between the PIP/PBP display and the main display.

COLOR

 Color	
Temperature	Normal
Red	50
Green	50
Blue	50
Advanced	>>
Red	50
Green	50
Blue	50
Cyan	50
Magenta	50
Yellow	50
Gamma	2.2
Tint	50
Saturation	50
Blue Light Shift	Off

1. **TEMPERATURE** – This option let users select different color temperatures of the monitor.
 - a. **NORMAL** – This color temperature is for users who prefer a neutral white balance.
 - b. **COOL** – This color temperature is for users who prefer a cool white balance.
 - c. **USER** – This color temperature is for users who would like to adjust the RGB (red, green, blue) values manually.
 - i. **ADVANCED SETTINGS** – This setting adjusts finer values besides RGB going into cyan, magenta, and yellow.
 - d. **WARM** – This color temperature is for users who prefer a warm white balance.
2. **GAMMA** – This option adjusts the gamma curve value of the monitor.
3. **TINT** – This option adjusts the tint of the entire monitor.
4. **SATURATION** – This option adjusts the color saturation of the entire monitor.
5. **BLUE LIGHT SHIFT** – This display mode filters out blue light for users who want blue light protection.

 System	
Overdrive	Medium
Adaptive Sync	On
HDR	Off
Ambient Light Sensor	Off
Sleep Mode	Off
Backcover Light	User
Light Mode	Strobe
Color	Red
Brightness	Weak
Language	English
OSD H Position	100
OSD Timer	30s
OSD Transparency	25%
Volume	50
Mute	Off
Reset	

1. **OVERDRIVE** – This option increases the pixel response time of the LCD screen.
2. **ADAPTIVE SYNC** – This on or off the Adaptive Sync, enabling smoother gameplay.
3. **HDR** – This option turns on or off the High Dynamic Range performance of the monitor.
4. **AMBIENT LIGHT SENSOR** – This option turns on or off the Ambient Light Sensor, auto-adjusting backlight levels based on environmental brightness.
5. **SLEEP MODE** – With the monitor given no video signal, enabling this option will make the monitor automatically shut off after 30 minutes, 60 minutes, or 2 hours.
6. **BACKCOVER LIGHT** – This option cycles through the different lighting modes of the lights on the back of the monitor.
7. **LIGHT MODE** – This option adjusts various styles of lighting.
8. **COLOR** – This option adjusts the color of the LED lights.
9. **BRIGHTNESS** – This option adjusts the intensity of the LED lights.
10. **LANGUAGE** – This option allows users to change the menu language of the monitor.
11. **OSD H POSITION** – This option adjusts the placement of the OSD menu horizontally.
12. **OSD TIMER** – This option adjusts the time it takes for the OSD menu to automatically shut off.
13. **OSD TRANSPARENCY** – This option adjusts the opacity of the OSD menu.
14. **VOLUME** – This option allows users to change the output level of the audio out port.
15. **MUTE** – This option silences the monitor speakers.
16. **RESET** – This option resets all values of the menu back to factory default.

Supported DisplayPort Resolution

RESOLUTION & REFRESH RATE
2560 x 1440 @ 60Hz, 120Hz, 144Hz, 165Hz
1920 x 1080 @ 60Hz
1600 x 900 @ 60Hz
1280 x 1024 @ 60Hz, 75Hz
1280 x 720 @ 60Hz
800 x 600 @ 56Hz, 60Hz, 72Hz, 75Hz
640 x 480 @ 60Hz, 67Hz, 72Hz, 75Hz

Supported HDMI Resolution

RESOLUTION & REFRESH RATE
2560 x 1440 @ 60Hz, 120Hz, 144Hz
1920 x 1080 @ 60Hz
1600 x 900 @ 60Hz
1280 x 1024 @ 60Hz, 75Hz
1280 x 720 @ 60Hz
800 x 600 @ 56Hz, 60Hz, 72Hz, 75Hz
640 x 480 @ 60Hz, 67Hz, 72Hz, 75Hz

Supported USB-C™ Resolution

RESOLUTION & REFRESH RATE
2560 x 1440 @ 60Hz
1920 x 1080 @ 60Hz, 120Hz
1280 x 720 @ 60Hz
800 x 600 @ 56Hz, 60Hz, 72Hz, 75Hz
640 x 480 @ 60Hz, 67Hz, 72Hz, 75Hz

*Specifications are subject to change without notice.

Troubleshooting

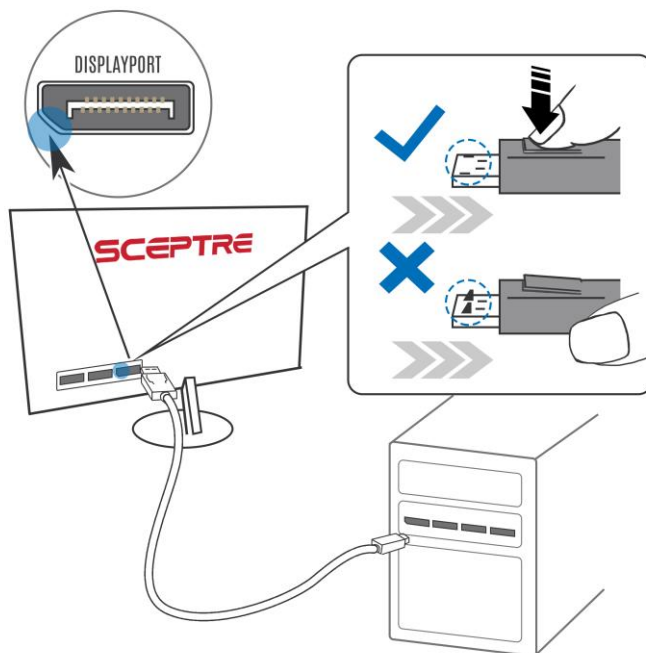
Problem	Possible solutions
THERE IS NO LED DISPLAY or SCREEN SAYS NO SIGNAL	Make sure you switched to the correct source. Check both sources to see video is on the other source. Check your video cable. It might be corrupt. Swap out the video cable for another one to see if the monitor will work. Check your power plug. See if it is fully plugged in on both the monitor and the wall.
MONITOR SAYS "SIGNAL OUT OF RANGE" s	<p>If you have a CRT monitor, please connect the CRT monitor to the computer and change the refresh rate down to 60 Hz via your video card's display settings menu. After the setting of 60 Hz has been changed, you can then use the C32 LED Monitor on the computer.</p> <ol style="list-style-type: none">1. To change the setting go to display settings by right clicking on your desktop with nothing selected. Choose the PROPERTIES option.2. Click on the SETTINGS tab, verify the resolution is NOT higher than 2560 x 1440, and click on the ADVANCED button.3. Click on the MONITOR tab and change the refresh rate to 60 Hz.4. Click on OK 2-3 times to finalize your change. <p>If you do NOT have a CRT monitor or it is already broken, please make sure both the C32 LED monitor and your computer is turned off.</p> <ol style="list-style-type: none">1. Turn on the LED monitor and the computer.2. While the computer is turned on, press the "F8" key on your keyboard continuously until a selection menu appears and select the "Safe Mode" option.3. When you have entered Safe Mode, please uninstall any video card driver and monitor driver by using either the "Add / Remove Programs" icon or going into "System."4. Properties" and manually removing anything under "Monitors" and "Display Adapters". After removing all the drivers, please reboot your computer and you should be able to see windows. Please install your monitor driver first, then your video card driver. Please remember to make sure your refresh rate should be at 60Hz.
I CAN'T OPEN THE OSD	You need to have a valid video signal going through the monitor before you can turn on the OSD.

Problem	Possible solutions
I CANNOT GET THE CORRECT RESOLUTION	<p>Sometimes your video card will not read the monitor correctly and will not allow you to achieve the resolution you want. Rebooting your computer will solve the situation.</p> <p>You can also make sure your video card's video drivers are up to date. You can find what video card you have by clicking on START then RUN. Type in "DXDIAG". When the diagnostic window pops up, click on the DISPLAY tab. The program will tell you what video chipset you have. Copy that name then search it with an online search engine like GOOGLE™. Find your video card company's web address and search for newer drivers. If updating your drivers does not work, you probably have one of the older video cards and cannot achieve a widescreen resolution. You will need to upgrade your video card to a newer one.</p>
THE VIDEO IS TOO BRIGHT NO MATTER WHAT I ADJUST	<p>Sometimes having older video cards this type of problem might happen due to newer LEDs having to provide HD video capability and not being fully compatible with older video cards. You can try adjusting the contrast to a lower value and adjust the brightness to compensate.</p>
THE WORDS AND VIDEO ARE TOO BLURRY	<p>Are you using the monitor's native resolution? If not, you will need to switch resolution to the native 2560 x 1440 at 60 Hz to make the words clearer.</p> <p>If the words are still blurry, please try enabling or disabling CLEAR TYPE function from windows.</p>
THE COLORS ARE NOT CORRECT	<p>Sometimes the colors are not correct because your DVI or DP or HDMI cable is loose or corrupt. Please try reconnecting your cable or swap out your current cable to see if the problem persists.</p>
HOW DO I RESET THE MONITOR	<p>Make sure there is a valid video signal to the monitor and press menu to open the OSD. Look for RESET under the OTHER options.</p>
I CHANGED MY COLOR SETTINGS NOW I CAN'T GET THE FACTORY DEFAULT BACK.	<p>Open the OSD, under OTHER, select RESET to reset all values back to factory default.</p>

Problem	Possible solutions
THE WORDS ARE TOO SMALL	<p>At the native resolution of 2560 x 1440, some people might feel that the words are too small to read. You can change the size of the words in Windows Operating System via its display properties.</p> <p>For Windows XP</p> <ol style="list-style-type: none"> 1. Right click on the background with nothing selected. Left click on the PROPERTIES option. 2. Click on the SETTINGS tab. 3. Under SETTINGS, click on the ADVANCED button. 4. Under GENERAL tab, change the size of the words by selecting the option NORMAL SIZE and change it to LARGE SIZE. 5. Click on OK on all windows to exit. 6. Once you have finished rebooting, the computer is ready for use. <p>For Windows VISTA or Windows 8 or Windows 10</p> <ol style="list-style-type: none"> 1. Right click on the Wallpaper. Left click on the PERSONALIZE option. 2. Click on ADJUST FONT SIZE (DPI) option on the left column and 3. Click on CONTINUE. 4. In there you can change the size of the words by changing from the option DEFAULT SCALE to LARGE SCALE. 5. Click on APPLY to finalize your selection. 6. Once you have finished rebooting, the computer is ready for use.
HOW DO I OBTAIN 165Hz REFRESH RATE	<p>Make sure your video card drivers are the newest version possible. Make sure your DP cable is capable of supporting 165Hz Refresh Rate. You can switch refresh rate via the display setting menu is under Display Setting -> Advance Display Setting -> Display Adapter Properties -> Monitor tab.</p>
I CAN'T GET MY USB-C™ DEVICE TO WORK WHEN I PLUG IT INTO THE BACK OF THE MONITOR	<p>The USB-C™ connection is only meant to be used as a video / audio connection between a computer and the monitor. There are no other functions supported.</p>
I PLUGGED IN USB-C™ FROM MY COMPUTER TO THE MONITOR AND THERE IS NO VIDEO	<p>Not every computer's USB-C™ port will support video out signals. Please check your cable and your computer to make sure those will support a video signal.</p>

How do I detach the DisplayPort Cable?

To detach the DP cable from the monitor, press down on the cables unlocking button while pulling the cable out.



How do I clean the monitor?

IMPORTANT

1. The power cable has to be removed from the socket before cleaning the display.
2. Do not use volatile solvent (alcohol, rosin, and toluene) to clean the display. These types of chemicals might damage the housing and the LCD glass.

Cleaning the bezel

1. Use a 100% cotton cloth or micro-fiber cloth for cleaning.
2. If the bezel is dirty to the point where you cannot simply dry wipe it, please lightly dampen the wiping material with clean water and wipe again. Wipe the display with a dry micro-fiber cloth or 100% cotton cloth afterwards.

Please Note:

- Make sure you wring the water out of the cloth before cleaning the bezel in order to prevent water from penetrating into the electronics.

Cleaning the Screen

1. Use a 100% cotton cloth or micro-fiber cloth for cleaning.
2. The LCD screen glass is extremely fragile. Do not scrape it with any material. Do not press or tap the screen to avoid cracking. When the screen is dirty to the point where you cannot simply dry wipe it, please lightly dampen the wiping material with clean water and wipe again. Wipe the display with a dry micro-fiber cloth or 100% cotton cloth afterwards.

Specification

Display panel	
Active Area / Screen Size	31.5" Diagonal Viewable
Aspect Ratio	Widescreen 16 : 9
Resolution	2560 x 1440 Quad HD
Brightness	1000 cd/m ² Max (HDR On)
Dynamic Contrast	2,500 : 1 typical
Response Time	1ms MPRT, 8ms (G-to-G) with OD
Refresh Rate	Up to 165Hz (DP)
Viewing Angle	Typical 178/178 Degree (Horizontal/Vertical)
Colors	16.7 million of colors sRGB overlap percentage CIE1931 99% (Typ.), NTSC area percentage CIE1931 85% (Typ.);
HDR	VESA DisplayHDR™ 1000
Panel Type	VA (Vertical Alignment)
LED Backlight	30,000+ Hours
Monitor Display	
Dimension	With Stand: 28.36" x 23.61" x 11.29" Without Stand: 28.36" x 16.87" x 5.22"
Weight	16.75lb (with stand), 11.90lb (without stand)
Wall Mount Pattern	75mm x 75mm
Base Screws	M5 x 15mm (3 pcs)
Wall Mount Plate Screws	M4 x 16mm
Power Input	Adapter Input: AC 100 – 240V~ 50/60Hz Power Consumption: 68W (200W Max)
Tilt	Forward: 5° Backward: 20°
Heights Adjustment	3.74" (±0.19")
Speaker	4Ω/3W
Features	
On Screen Display Control (OSD)	QuickStart, Picture, Color, System
OSD Language	English (Default), French, Spanish, Chinese
Adaptive-Sync	Supported
Preset Picture Mode	Standard, User, Movie, ECO
Preset Game Mode	RTS, FPS
Blue Light Shift	Available
I/O	HDMI 2.0 x 3, DP 1.4 x 1, 3.5mm Audio Out, USB-C 3.1, USB-A Service
Compliance	FCC, RoHS, cTUVus, ISTA, HDMI

*Specifications are subject to change without notice.

LIMITED PRODUCT WARRANTY

Please read this warranty card carefully, it is a “ONE-YEAR LIMITED WARRANTY” on parts and labor (90 days for commercial use) and is only valid when purchased from an Authorized Reseller, only on new and non-refurbished product, and available to customers in the Continental US, Alaska, Hawaii, and Puerto Rico. See below for the SCEPTRE Extended Service warranty.

SCEPTRE's Responsibility

SCEPTRE units purchased from an authorized SCEPTRE U.S. Reseller in the United States and that are used in the fifty (50) United States or Puerto Rico and Canada are warranted to be free from manufacturing defects in materials and workmanship for a period of one (1) year from the date of their original retail purchase (or a period of ninety (90) days for commercial use). If the unit fails to conform to this warranty, we will service the units using new or refurbished parts. In the event that the part required for replacement is no longer in production and/or is obsolete, SCEPTRE will repair or replace the unit with similar or like parts of equal value. If a similar or like part is not available, a charge may be incurred to the owner, for any upgraded parts substituted.

Service Labor

During a period of one (1) year from the effective warranty date (or a period of ninety (90) days for commercial use), SCEPTRE will provide, when needed, service labor to repair a manufacturing defect at its designated Service Center. To obtain warranty service in the United States, you must first call our Customer Support at (800) 788-2878. The determination of service will be made by SCEPTRE Customer Support. PLEASE DO NOT RETURN YOUR UNIT TO SCEPTRE WITHOUT PRIOR AUTHORIZATION.

Parts

New or remanufactured parts will be used for repairs by SCEPTRE at its designated Service Center for one (1) year (or ninety (90) days for commercial use) from the effective warranty date. Such replacement parts are warranted for the remaining portion of the original warranty period.

Service

During the one (1) year (or ninety (90) days for commercial use) warranty period, SCEPTRE will, at its option and sole discretion, repair or replace defective parts, including replacement of the entire Panel. The Customer will be required to ship the unit to the Service Center indicated at the time Customer Support is contacted to make the necessary repairs, you are responsible for all transportation charges to the service facility. SCEPTRE is not responsible for the de-installation or re-installation of the unit.

Packaging and Shipping Instruction

When you send the product to an authorized SCEPTRE service facility you must use the original carton box and packing material or an equivalent as designated by SCEPTRE. If you no longer have them, please contact Sceptre's Customer Support.

Not Covered

This warranty does not cover the following: cosmetic defects; damage, malfunctions, or failures resulting from shipping or transit accidents, abuse, misuse, operation contrary to furnished instructions, operation on incorrect power supplies, operation with faulty associated equipment, modification, alteration, improper servicing, tampering and or, damage from fire, water, lightning, power surges, abnormal environmental conditions, or other acts of nature; normal wear and tear (SCEPTRE reserves the right to determine “wear and tear” on any and all products); unsatisfactory visual or audio performance not caused by a manufacturing defect; or displays on which the serial number has been removed or defaced. Image Sticking caused by operating at excessive brightness levels for extended periods or mishandling are

not covered by this warranty. Installation, removal, transportation and reinstallation of a display and routine maintenance and cleaning, are not covered by this warranty. Any hardware, components, and/or software bundled with the display are not covered by this warranty. Any damages caused directly or indirectly by Buyer's or Reseller's "Value Added Feature" are not covered by this warranty or Sceptre, Inc. Any damages of any kind including, but not limited to, direct or indirect damages, lost profits, lost savings, or other special incidental, exemplary or consequential damages whether for breach of contract, tort, or otherwise, or whether arising out of the use of or inability to use the product, even if SCEPTRE, INC. or any dealer, distributor or authorized service provider/partner has been advised of the possibility of such damages, or any claim by any other warranty are not covered by this warranty or Sceptre Inc.

ANY IMPLIED WARRANTIES, INCLUDING ANY IMPLIED WARRANTY OF MERCHANTABILITY AND FITNESS FOR A PARTICULAR PURPOSE SHALL BE LIMITED IN DURATION TO THE PERIOD OF TIME SET FORTH ABOVE. OUR LIABILITY FOR ANY AND ALL LOSSES AND DAMAGES RESULTING FROM ANY CAUSE WHATSOEVER, INCLUDING OUR NEGLIGENCE, ALLEGED DAMAGE OR DEFECTIVE GOODS, WHETHER SUCH DEFECTS ARE DISCOVERABLE OR LATENT, SHALL IN NO EVENT EXCEED THE PURCHASE PRICE OF THE DISPLAY. WE SHALL NOT BE RESPONSIBLE FOR LOSS OF USE, COMMERCIAL LOSS OR OTHER INCIDENTAL OR CONSEQUENTIAL DAMAGES. SOME STATES DO NOT ALLOW LIMITATIONS ON HOW LONG AN IMPLIED WARRANTY LASTS OR THE EXCLUSION OR LIMITATION OF INCIDENTAL OR CONSEQUENTIAL DAMAGES, SO THE ABOVE LIMITATIONS OR EXCLUSIONS MAY NOT APPLY TO YOU. This warranty gives you specific legal rights, and you may also have other rights which vary from state to state. This is the only warranty applicable; no one is authorized to extend or modify it or to grant any other warranty. SCEPTRE retains the right to assess all warranty claims and to determine if damages are covered by the warranty. In case of a claim that is not covered by the warranty, you will be contacted to determine whether SCEPTRE should repair the damage for a fee or whether the product should be returned to you as received by the repair center.

Dead Pixel Policy

SCEPTRE sets limit on the LCD at 3 dead pixels in a cluster adjacent to each other, or 5 dead pixels in a combination of color and brightness. Any number of dead or bad pixels under the limit is considered to be within normal performance specification of the LCD and is not considered defective.

Owner's Responsibility

Effective Warranty Date


Warranty begins on the date of sale to the end user. To ensure warranty service, keep the dated bill or sale receipt as evidence of the purchase date. If you can no longer obtain your receipt, the warranty will revert to the unit's manufacture date according to the serial number of the unit. This limited warranty applies only to the original purchaser and is non-transferable.

Warranty Service

For warranty service information, contact SCEPTRE Technical Support at email address SceptreTS@SCEPTRE.com, via phone at (800) 788-2878, or via World Wide Web chatting service at www.Sceptre.com. SCEPTRE Technical Support is available Monday to Friday 8:30 AM to 5:30 PM Pacific Time. Parts and service labor that are SCEPTRE's responsibility (see above) will be provided without charge. Other services or services not covered by the warranty are at the owner's expense. You must provide the model, serial number, and date of purchase. Before you ask for warranty service, read your User Manual. You might avoid a service call.

Warranty conditions are subject to change, for latest Warranty Terms and Conditions and additional information regarding your warranty, please see complete details online at www.SCEPTRE.com.

Disclaimer, Trademarks, Icons & Copyright Information

-  “HDMI, the HDMI logo and High-Definition Multimedia Interface are trademarks or registered trademarks of HDMI Licensing LLC.”
- DisplayPort™, DisplayPort™ over USB-C™, the DisplayPort™ logo, and the DisplayPort™ over USB-C™ logo are trademarks owned by the Video Electronics Standards Association (VESA®) in the United States and other countries.
- VESA® is a registered trademark and DisplayHDR™ is a trademark of VESA. All other trademarks, service marks, registered trademarks, and registered service marks are the property of their respective owners.
- USB-C™ is a registered trademark of USB Implementers Forum, Inc.
- Microsoft, Windows are registered trademarks of Microsoft Corporation in the United States and other countries.
- SCEPTRE is a trademark or registered trademark of Sceptre Group.
- Sceptre, Inc. shall not be liable for technical or editorial errors or omissions contained herein; nor for incidental or consequential damages resulting from furnishing this material, or the performance or use of this product.
- In the interest of continuing product improvement, Sceptre, Inc. reserves the right to change product specifications without notice. Information in this document may change without notice.
- No part of this document may be copied, reproduced, or transmitted by any means, for any purpose without prior written permission from Sceptre, Inc.

FCC Compliance Statement

This device complies with Part 15 of the FCC Rules.

Operation is subject to the following two conditions:

(1) This device may not cause harmful interference, and (2) this device must accept any interference received, including interference that may cause undesired operation.

Please Note: This equipment has been tested and found to comply with the limits for a Class B digital device, pursuant to part 15 of the FCC Rules. These limits are designed to provide reasonable protection against harmful interference in a residential installation. This equipment generates uses and can radiate radio frequency energy and, if not installed and used in accordance with the instructions, may cause harmful interference to radio communications. However, there is no guarantee that interference will not occur in a particular installation. If this equipment does cause harmful interference to radio or television reception, which can be determined by turning the equipment off and on, the user is encouraged to try to correct the interference by one or more of the following measures:

- Reorient or relocate the receiving antenna.
- Increase the separation between the equipment and the receiver.
- Connect the equipment into an outlet on a circuit different from that to which the receiver is connected.

Caution: To comply with the limits for an FCC Class B computing device, always use the signal cord and power cord supplied with this unit.

The Federal Communications Commission warns that changes or modifications to the unit not expressly approved by the party responsible for compliance could void the user's authority to operate the equipment.

European Notice

Products with the CE marking comply with both the EMC Directive (89/336/EEC), (93/68/EEC) and the Low Voltage Directive (72/23/EEC) issued by the Commission of the European Community.